

Installation and Operating Instructions

Rail clamp 68.05

Des. 4 LONG



Robel Bahnbaumaschinen GmbH

Industriestrasse 31, 83395 Freilassing
PO Box 3222, 83398 Freilassing

e-mail: info@robel.info

Phone: (08654) 609 - 0

Internet: www.robel.info

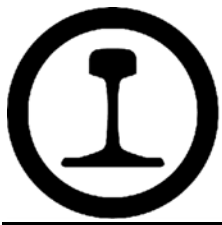
Fax: (08654) 609 - 445

These instructions were issued taking into consideration
the latest technology at the time of printing.

They are subject to change due to new developments.

Dimensions and weights are approximate.

Some photos show special designs.



ROBEL
Bahnbaumaschinen GmbH

68.05 / 4

RAIL CLAMP

Installation and Operating Instructions / Executive Summary

ATTENTION: This executive summary is no substitute for the content of the full installation and operating instructions.

- Remove ballast under the rail in the clamping area.
- Clean all contact areas of the fishplates, rails and rail clamps.
- Tightening torque of all screw connections: 580 [Nm].



Figures 1 and 2: Installation

When installing the rail clamps the following procedure has to be adhered to:

1. In order to ensure a tight fit of the fishplates after installation the rail fastenings on the adjacent sleepers have to be loosened such that a tight-fit installation of the fishplates is possible. This has to be done after the ballast has been cleared between the sleepers. The fishplate locking mechanism (fishplates and clamps) has to be tightened securely during installation. The fishplates have to be bashed with a sledge hammer and the hexagonal nuts tightened with a torque of **580 Nm** using a torque spanner. (Caution: Do not bash the rail clamps!)
2. After the first train has passed, the fishplates have to be re-bashed with a sledge hammer and the required torque of 580 Nm has to be checked using a torque spanner.



Figures 3 and 4: Installation examples

CONTENTS

1	TECHNICAL DATA.....	1
2	SAFETY	3
2.1	General dangers	3
2.2	Information about dangers	3
2.3	First aid.....	3
3	DESCRIPTION OF DEVICE	5
3.1	Designated use	5
3.2	The individual components	5
4	OPERATING CONDITIONS.....	7
4.1	Operating conditions.....	7
4.2	Storage conditions	7
4.3	Transport conditions.....	7
5	APPLICATION	9
5.1	General	9
5.2	Preparing the rail clamp for installation	10
5.3	Installation.....	11
5.4	Removal.....	15
6	MAINTENANCE.....	17

7 APPENDIX A.....	19
7.1 Designated use	19
7.2 Liability exclusions.....	19
7.3 Copyright.....	19
7.4 General rules	20
7.5 Acceptance, equipment, operating licence	20
7.6 Safety regulations.....	21
7.7 Protection and use of the device.....	21
7.8 Intended audience for operating instructions.....	21
7.9 Accident prevention.....	22
7.10 Safety principles	22

1 TECHNICAL DATA

Length along the rail	190 mm
Maximum width at right angle to the rail	280 mm
Height	130 mm
Weight	21.5 kg

- Standard design for rail types UIC 60, S49 und S54
- Special designs for other rail types **upon request**.
- The standard design of the rail clamps is **gauge-independent** for the rail types mentioned.

Page remains blank.

2 SAFETY

2.1 General dangers

The device is built securely according to the current state of technology.
For further information see Appendix A.

2.2 Information about dangers

All the following information and instructions are intended to protect the operator's personal safety and physical well-being against dangers and the assets of the company operating the device from damage. The instructions on hand consistently use certain terms to distinguish between types of danger and the level of consequences to be expected from not complying with instructions. These are as follows:



DANGER: points out that non-compliance with instructions may result in death or severe injury to the operator or considerable damage to the operating company's assets.

CAUTION

CAUTION: points out that non-compliance with instructions may result in injury to the operator or damage to the operating company's assets.



INFORMATION: contains important information about the device, its operation or about a section of the instructions on hand.

2.3 First aid

Always ensure that proper "first aid" equipment is provided.

Consult the medical duty officer or doctor at your office regarding "first aid" measures and appropriate equipment.

Page remains blank.

3 DESCRIPTION OF DEVICE

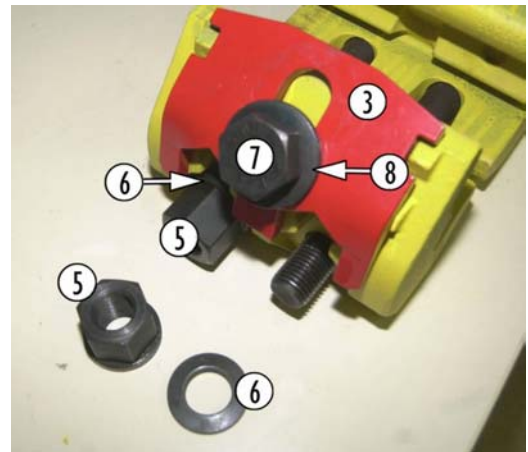
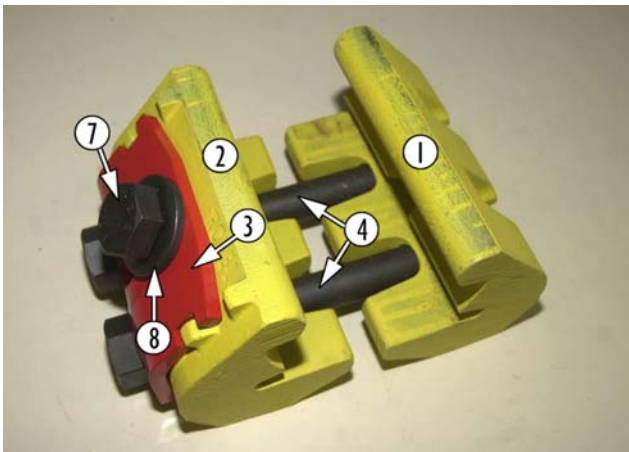
3.1 Designated use

The gauge-independent rail clamps of type 68.05, design 4, are suitable **only** for flat bottom rails S49, S54 and UIC60.

The rail clamps are used for joining two rail ends securely with a tight fit or for securing rail breaks.

For this, two fishplates have to be used and mounted on both sides of the rail.

3.2 The individual components



- 1 Jaw
- 2 Jaw with locking mechanism
- 3 Locking plate
- 4 2 hexagonal bolts M27 x 260
- 5 2 hexagonal nuts with collar M27
- 6 2 lock washers "HS"
- 7 Hexagonal bolt M27 x 2 x 50
- 8 Tension washer

Page remains blank.

4 OPERATING CONDITIONS

4.1 Operating conditions

The use of rail clamps is not subject to restrictions due to weather conditions.

CAUTION

The appliance is not sea water-proof.

Do not fit rail clamps where groundwork is affected by salt water.

4.2 Storage conditions

Rail clamps are to be stored in a dry place.

4.3 Transport conditions

Rail clamps in transit are to be protected against extreme impact or blows.

CAUTION

Care should be taken not to damage the locking mechanism.

Page remains blank.

5 APPLICATION

5.1 General

CAUTION

PRECONDITIONS:

- Current permanent way installation specifications relating to the temporary repair of rail fractures and joints must be observed without fail!
 - Rail clamps must **NOT** be used for connecting insulated joints!
 - The **correct fishplate** for each rail type must be fitted (=> please observe country-specific railway regulations!). See also chapter 1.
 - **The mounting of rail clamps without fishplates is strictly prohibited.**
 - **It is strictly prohibited to use damaged rail clamps.**
-



Depending on the location and nature of the break, one or two sets of rail clamps are required.

Only one set of rail clamps is required:

- for clamping a rail joint between sleepers.

Two sets of rail clamps are required:

- if two rails of different types are joined by cranked fishplates, and
- at the fracture points of a rail welding.

For this, rail clamps 68.05 must be fitted at both ends of the fishplate.

68.05 / 4
RAIL CLAMP

5.2 Preparing the rail clamp for installation



- Open locking bolt (7) (approx. 7 rotations).
 - Slide up locking plate (3), lock into place at the notches and fix by tightening the locking bolt.
 - Loosen hexagonal nuts (5) with a suitable tool (SW41) and unscrew.
 - Remove lock washers (6).
 - Pull the jaws apart.
- ⇒ The rail clamp is ready for installation.



5.3 Installation

5.3.1 Important information

When installing the rail clamps the following procedure has to be adhered to (Extract from: TM 2006-083 I.NVT (F) of DB AG):

- In order to ensure a tight fit of the fishplates after installation the rail fastenings on the adjacent sleepers have to be loosened such that a tight-fit installation of the fishplates is possible. This has to be done after the ballast has been cleared between the sleepers.
- The fishplate locking mechanism (fishplates and clamps) has to be tightened securely during installation. The fishplates have to be bashed with a sledge hammer and the hexagonal nuts tightened with a torque of **580 Nm** using a torque spanner.
- After the first train has passed the fishplates have to be re-bashed with a sledge hammer and the required torque of 580 Nm has to be checked using a torque spanner.

68.05 / 4
RAIL CLAMP

5.3.2 Installation instructions



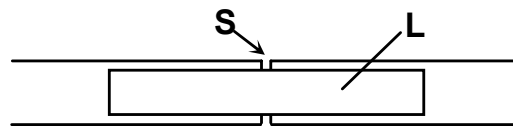
Danger of trapped fingers!

- Wear heavy-duty gloves!

CAUTION

Installation is only permitted if underside of foot of the rail is flat!

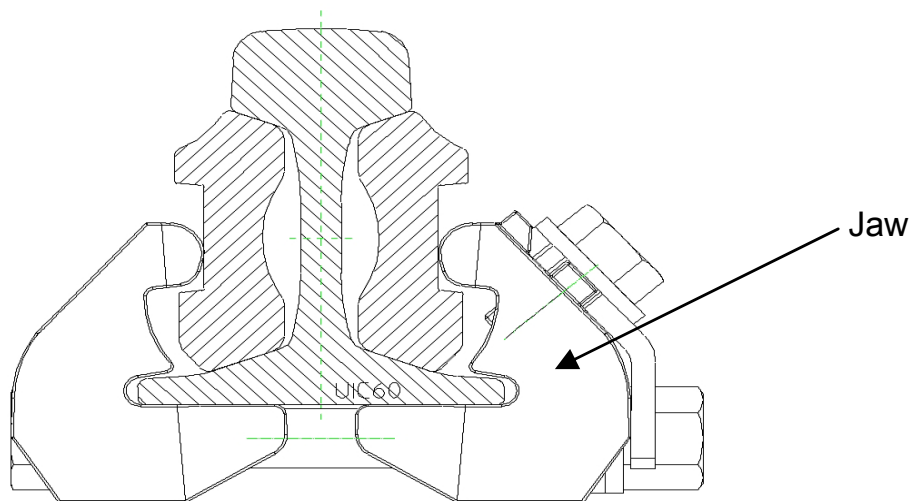
- Clear away enough ballast beneath the rail joints so that the rail clamp can easily be pushed under the rails.
- Check that the underside of the foot of the rail is flat, e.g. without any interfering weld beads.
- On both sides of each rail web insert the appropriate (approved) fishplates in the space between rail head and foot so that the middle of each fishplate (L) lies at the rail joint (S) (see the following schematic drawing and picture).



- Install the rail clamp such that the guide surface of the jaw lies tightly on the underside of the rail.



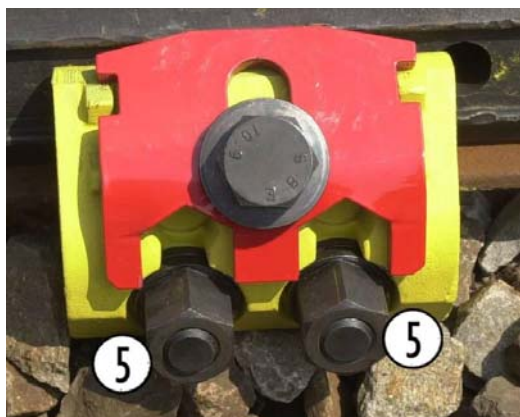
- ⇒ This guarantees that the rail clamp presses the fishplates correctly against the web of the rail – see the following schematic drawing:



The functionality of the rail clamp matches the rail profiles S49, S54 and UIC60. The slightly asymmetric fit of the jaws on UIC60 rails is due to the nature of the system.

68.05 / 4**RAIL CLAMP**

- Insert the hexagonal bolts into the jaws such that the nuts (pos. 5 in following figure) can be screwed onto the side of the locking plate.



- Install the lock washers on the threads on both sides with the collar-side of each nut facing the rail and tighten by hand.
- Check that the rail clamp is fitted securely and correctly.
- Tighten both nuts (pos. 5) with a suitable tool SW41 (e.g. torque spanner) and with a torque value of **580 Nm**. After tightening, the fishplates have to be bashed with a sledge hammer **and the nuts re-tightened with a torque value of 580 Nm** (see pictures below).



This procedure has to be repeated until no further signs of settlement can be observed.

CAUTION

Do not bash the rail clamps!

- Two spanner surfaces of each collar nut have to be vertical after tightening so that the locking plate can fully lock into place (see arrows in picture below):



- Pull the locking plate downwards and tighten bolt (pos. 7) with a suitable tool (SW41) and a torque of **580 Nm**.

The rail clamps will remain in place for as long as it is necessary.

CAUTION

Corrosion due to rusting may occur between fishplates and rail!

- Rail clamp bolts are to be checked regularly and re-tightened if necessary! => **Respective country and railway specific regulations have to be adhered to.**
-

5.4 Removal

For the removal of the rail clamps proceed in reverse order of the installation procedure described above.

68.05 / 4
RAIL CLAMP

5.5 Installation examples



6 MAINTENANCE

Rail clamps are virtually maintenance-free.

- Dirty and/or rusty threads have to be cleaned using a wire brush. Grease afterwards.
- Keep threads smooth-running (grease).

Page remains blank.

7 APPENDIX A

7.1 Designated use

See chapter 3.1, page 5.

7.2 Liability exclusions

Any use of the device other than that specified above is not designated and endangers the lives and health of operating and maintenance personnel as well as the material assets of the operating company. The manufacturer of the device declares himself free from liability for damage to persons or property belonging to the operating company or third parties if:

- the device is not used according to the regulations,
- the operating and maintenance personnel have not read or understood the available instructions and have used the device for purposes other than it was devised for,
- the operating and maintenance personnel are not sufficiently qualified,
- the device is operated under conditions which exceed the specified limiting values (e.g. 200 km/h, 580 Nm),
- the device is not / has not been serviced according to the rules within the specified intervals.

These exclusions from liability for damage to people or material property do not affect other grounds for exclusion.

7.3 Copyright

Specific characteristics and constructional peculiarities of the device or parts of it are the intellectual property of ROBEL Bahnbaumaschinen GmbH. The copyright of these installation and operating instructions remains the property of ROBEL Bahnbaumaschinen GmbH. They may not be reproduced either in full or in part, published or otherwise exploited for competitive purposes, regardless of whether payment takes place or not. The operator's personnel may not pass on the contents of the instructions to anyone outside the business.

7.4 General rules

Effective legal provisions and accident prevention regulations in the respective fields of application must generally be observed. If they are not observed, the operator of the device is liable for the legal consequences.

In the event of differences between prevailing regulations applying to the operator's use of the device and the manufacturer's or its subcontractor's regulations, whichever stipulations are the most stringent must apply. .

The buyer must provide all necessary machinery, equipment and material resources for putting the delivered product into operation and training staff. He must also make unrestricted, safe and sufficiently long track and work sections available, on which staff can learn how to operate and use the delivered product and practise these tasks.

As the manufacturer and/or the supplier of the purchased item have no influence over the personnel and operational circumstances of the buyer they will not be responsible for the effectiveness of the training.

ROBEL Bahnbaumaschinen GmbH, together with its customer service organisation, is happy to provide advice, training and other consultative services; details and conditions relating to these services must be agreed separately.

7.5 Acceptance, equipment, operating licence

The buyer is responsible for checking that the purchased item is equipped according to the specified and agreed specifications and that its condition, operative capability, and especially its safety features conform to these specifications; the buyer is responsible for accepting the purchased item according to the contractually agreed stipulations.

The buyer must install all equipment stipulated by respective operating and safety regulations, standards, statutory requirements or other regulations in the purchased item.

Delivery of the purchased item does not include this kind of equipment, unless other agreements have been reached.

The buyer is also responsible for presenting the purchased item with the necessary documentation from the office in charge so that the operating licence can be granted. The necessary documentation to do this (descriptions, proof, certificates, etc.), to be supplied by the manufacturer or supplier, must be specified and agreed in the contract of sale.

The buyer shall pay for any other measures that might be necessary to obtain additional operating licences.

7.6 Safety regulations

The necessary requirements for protecting life, health, material property and the environment when handling the device must take precedence!

Before using the device, make sure you can prove that all personnel affected have been made aware of all the relevant:

- statutory safety regulations,
- stipulations of the respective building code and works rules,
- stipulations of the respective professional and trade associations,
- industrial and environmental safety regulations,
- licensing regulations,
- internal company regulations and
- all other applicable regulations, in addition to and in concert with the manufacturer's safety and operating regulations.

If necessary, the office in charge of operation must lay down additional regulations and measures geared to the special tasks of the device to ensure that all additional safety requirements are met.

We would ask you to pay special attention to the following safety regulations pertaining to the system, in addition to the information detailed above.

7.7 Protection and use of the device

- Protect the device to prevent unauthorised persons using it.
- The device should only be started up and used if all necessary conditions for safe operation have been fulfilled.

7.8 Intended audience for operating instructions

These instructions contain the necessary information for using the device they describe in accordance with the regulations.

The instructions have been written exclusively for technically qualified personnel. Qualified personnel in this sense are personnel who have proven their ability to use this device, either on the basis of certificates or experience.

7.9 Accident prevention

The statutory and company accident prevention regulations also apply to these installation and operating instructions; they must be read carefully and observed.

- Familiarise yourself with potential dangers connected with the device's specific area of activity and ensure that you receive appropriate training before using the device.

- Check to make sure the device is in proper working condition before using it:
 - Make sure equipment, devices, tools, accessories and safety equipment, etc. are complete and intact.
 - Make sure servicing and maintenance work has been carried out professionally and on time.
 - Make sure all prerequisites for carrying out work safely have been met with regard to yourself and other persons, material property and the environment.

- Beware of the particular dangers of the device and your work area, especially:
 - persons and obstacles,
 - compliance with safety clearances,
 - traffic on adjacent tracks,
 - secure fitting of all safety equipment,
 - compliance with all operationally necessary protective measures.

- Use only tools and appliances that work properly.

7.10 Safety principles

The basic accident prevention regulations of the Professional Organisations have to be adhered to.

- Only properly trained personnel are to put the device into operation!
- Possible sources of danger are also indicated on the device with warning signs and/or markings.